

LOAD RATED "D" SHACKLES

- These yellow pin Grade S screw pin shackles are manufactured by Beaver, and comply to AS 2741.
- Screw pin shackles are used mainly for non-permanent applications.
- The Grade S shackles are recommended where high strength is required such as lifting, towing, and 4WD applications.
- They are Hot Dipped Galvanised

SIZES in STOCK

6 x 8mm

8 x 6mm

8 x 26mm

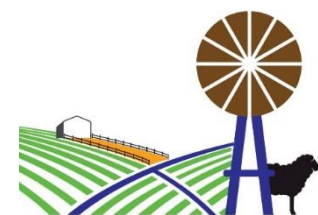
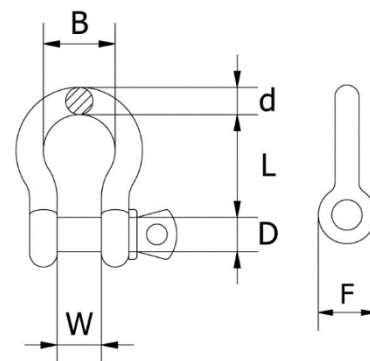
10 x 11mm

13 x 16mm

13 x 41mm



Identification & Measurements



25 Moorundie St. TRURO SA. 08 8564 0214
sales@truroagencies.com.au : www.truroagencies

TRURO
AGENCIES