



# Wool Press Care & Maintenance



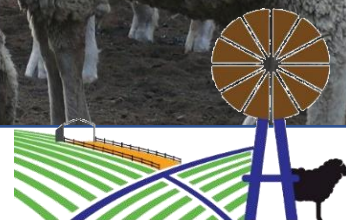
Heiniger

MACBro Industries

Sunbeam

LUCO

TPW







# Wool Press Care & Maintenance

## Power Supply

It is the responsibility of the owner to ensure correct power supply.

- The voltage specified on the electric motor manufacturers plate and that of the local power supply must match. The press motor may only be connected to an AC power supply.
- In the event that the press is operated from a generator, the mains supply voltage must not exceed that specified on the manufacturer's plate.
- Never plug the press into damaged sockets.
- Observe the relevant regulations applicable in your country.
- Completely unroll the power cable before plugging in.
- If a 3 phase motor is fitted the rotation must be checked prior to using the press. Correct rotation direction is indicated on the pump.

## General maintenance

Ensure the motor is switched off and the power disconnected while performing maintenance. Always contact an authorized service centre if you are unsure how to rectify problems and in the event of a malfunction not contained in this manual. Maintenance instructions listed here are guide lines only, because of differing conditions that presses experience it is impossible to say what maintenance a press will need and when.

## Daily maintenance. (8 to 10 hrs of operation)

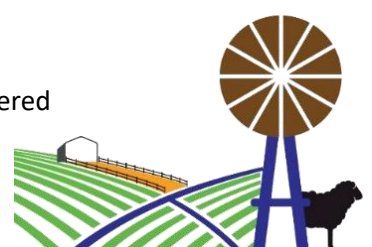
- Grease/oil the locking bar, rotate and lift the locking bar for better access. Use a good quality general purpose grease and good quality engine oil.
- Check correct operation and adjustment of safety device.
- Check the security of the platen retaining bolt that secures the platen to the cylinder rod.

## Monthly maintenance. (200 hrs of operation)

- Grease both guide rods and grease/oil all moving parts.
- Check the accuracy of the scales. Check the weight of the most recently pressed bale on scales known to be accurate.
- Check the security of the cylinder retaining nuts and platen retaining bolt.
- Check the security of all other fasteners. Some fasteners secure hinging parts, do not over tighten these fasteners. Hinging parts need to move freely through the range of movement without being loose.
- Check the hydraulic oil level and replenish as necessary. Use specified oil.
- The hydraulic oil level is checked with the platen in the up position. To check, remove the filler/breather cap on the tank. The oil should be approximately 100mm from the top +/- 25mm.
- Oil the bell crank assembly and baling pin bosses, remove the pinning guard to do so. Apply oil to all moving joints, wipe off excess. The bell cranks can be moved in and out by hand.
- Check the security of the circlips retaining all pins.
- Check the adjustment of the baling pins.
- Clear any wool from inside the pinning guards

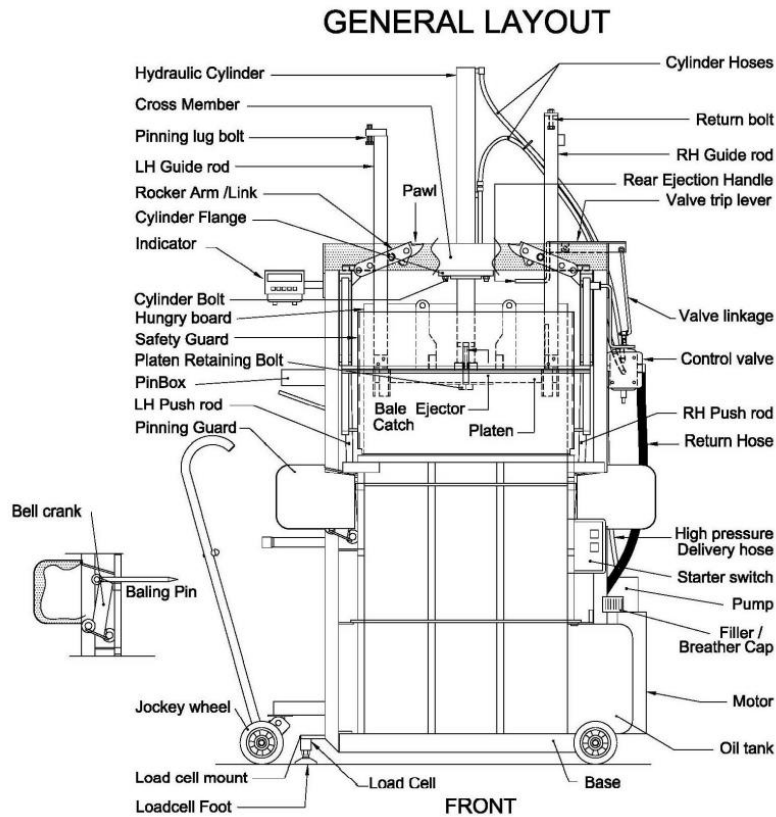
## Cover.

We strongly recommend that during prolong periods of non-use, your wool press is covered over, either with dust proof material or a purpose made cover. Airborne dust particles covering hydraulics etc will limit seal life & result in higher maintenance costs.

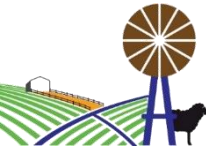


# Wool Press Care & Maintenance

General Layout - Diagram based on late model TPW



## Service & Reconditioning

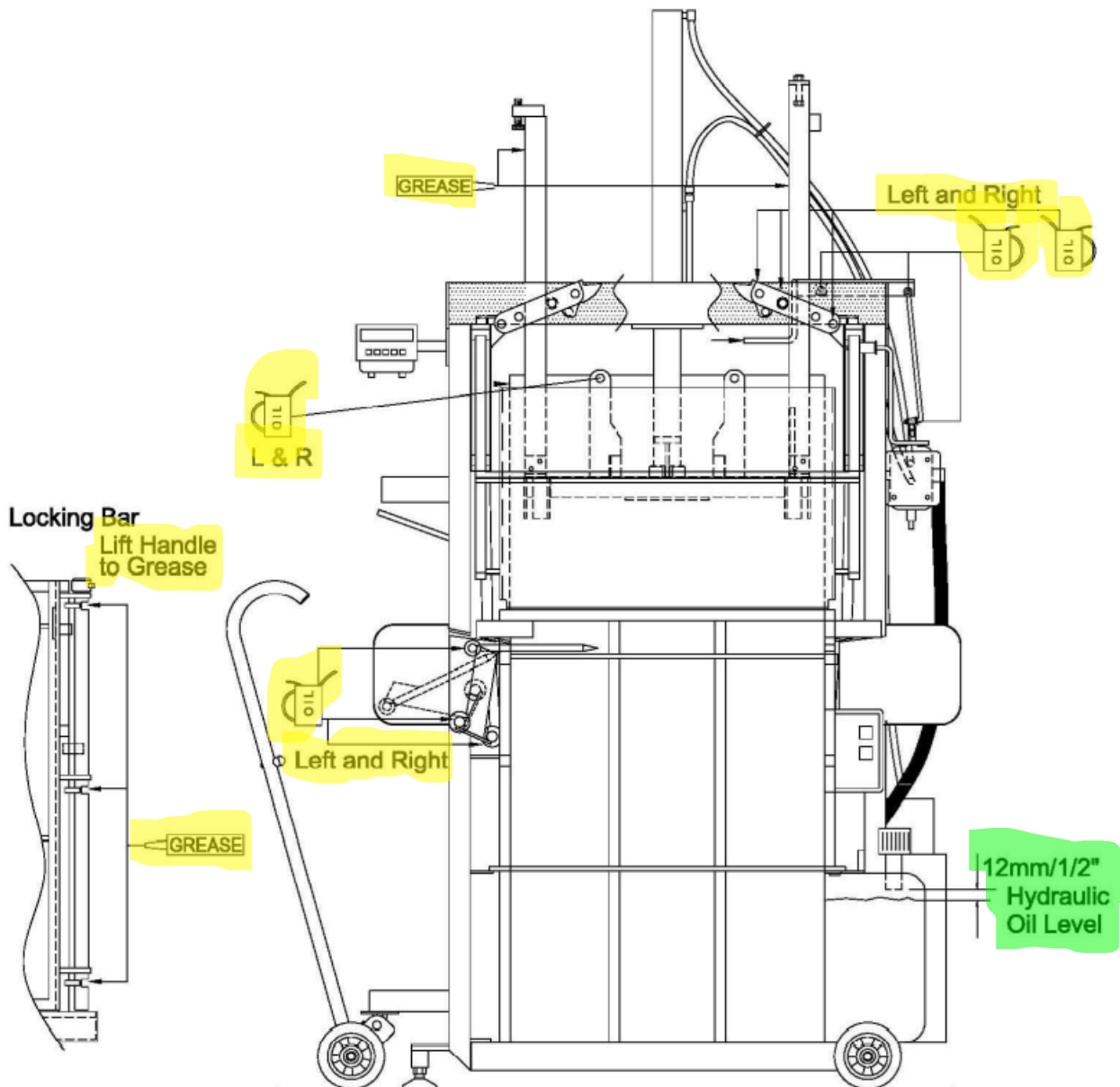


Breakdown & Maintenance Hot Line: Ph. 08 8564 0214

Depending on workload it is recommended that your wool press should be serviced at least every two years. Contact **TRURO AGENCIES 08 8564 0214** to arrange your service.

Lubrication Points - diagram based on late model TPW

## LUBRICATION POINTS



FRONT

### Hydraulic Oil



**TRURO AGENCIES** recommend Hi Tec HVI 46 Hydraulic Oil for Wool Press applications. They are much less likely to cause any harm to soil, waterways or other parts of the environment than mineral oil-based lubricants.